

staircases



Welcome

David Smith St Ives was founded in 1960

We've been carefully crafting bespoke timber staircases ever since. Based in St Ives, Cambridgeshire, we are a family run business specialising in self-build and luxury development projects, constructed across the UK. We also manufacture bespoke roof trusses, engineered floor joists and glulam beams.

All our staircases are made from the finest, FSC®-certified timber, using traditional carpentry skills supported by modern and efficient technologies.

Over the past 60 years, we've built a talented team of staircase experts, including in-house designers, technical experts, specialist carpenters and project managers. We pride ourselves on our attention to detail, our flexibility and our customer-first approach – always preferring to work closely with our clients from initial concept and design right through to final installation.

We hope you enjoy browsing our work.

Our stairs team

Here to help

At David Smith St Ives, we think small details make a big difference. We also think a personal touch goes a long way. That's why from the start of your project right to the very end, you'll always deal directly with our expert staircase team.



Adam Ding
Manager



Nick Wilkes
Consultant



Matt Wood
Senior Estimator



Darcy Attrill
Estimator



Faye Jolly
Estimator



Josh Miller
Designer



Dan Cox
Designer



Mike Anderson
Designer/Site Rep

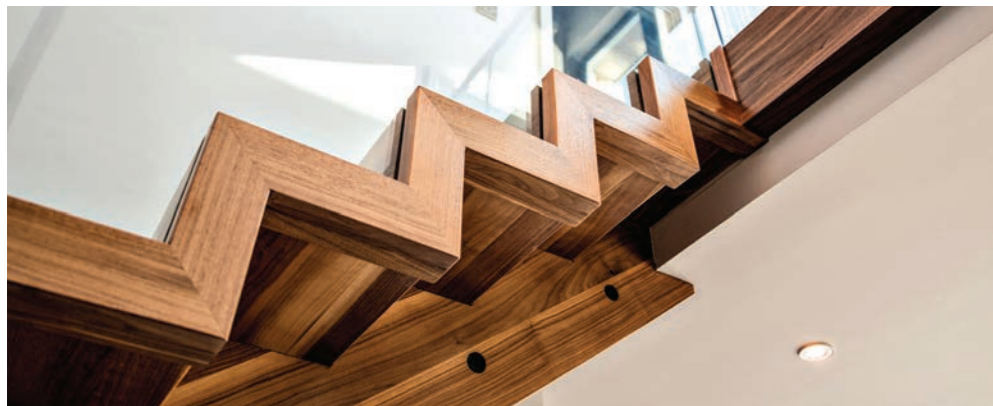




Potton designed and built the UK's first Passivhaus –compliant showhome at Little Paxton, near St Neots. We were chosen by Potton to create a feature staircase for this and four other showhomes on the site.

Our answer was a floating staircase, with a structural profiled glass balustrade designed to maximise available light and give a sense of space in the hallway.

Striking, solid American black walnut was the timber of choice, with a continuous circular handrail crowning the balustrade.



**Potton Passivhaus,
St Neots**

American black walnut



From early concept and design, to bespoke manufacture and installation, we worked with our client to create a modern oak staircase and galleried landing for their home.

We suggested an open-riser design, with contemporary concealed-fixing glass balustrades on the stairs and landing, to enhance the light and spacious feel of the open plan space.

Solid oak curved downstands under each tread finish the stairs, giving an elegant yet contemporary touch.



**Biddenham,
Bedfordshire**

Solid oak open riser



"Build us an imposing staircase fit for an English country manor" – that was the brief from the owner of this large property.

We used beautiful solid oak throughout the cut and bracketed flights, while a wide, tapered bottom flight brings added grandeur to the space. The balustrade features alternating fluted-turned and plain-turned spindles.



**Bovingdon,
Hertfordshire**

—
Full oak



We designed and built a statement staircase for this Georgian-style new build mansion.

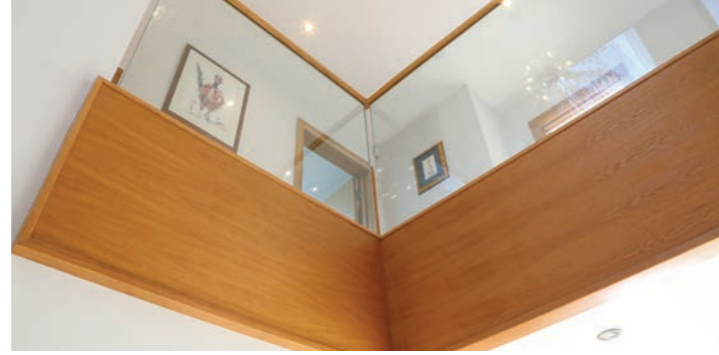
The curved (or helical) design complements the curves of the architecture, with a sweeping handrail leading the eye up towards the first floor.

The balustrade features structural powder coated spindles, a continuous American white ash handrail, and volute handrail detail on the bottom step.



**Beech Hill,
Greater London**

American white ash



We worked closely with the client to create the illusion of floating steps in this staircase masterpiece. Featuring a concealed steel structure, seamlessly blending with solid oak tread cladding and handrails. The illusion is achieved with a structural glass balustrade boasting hidden fixings, making the treads appear to pass through the glass, to create a modern aesthetic where craftsmanship meets innovation.



**Conington,
Cambridgeshire**

Solid Oak



An exemplary showcase of a cut-string staircase, a perfect blend of style and craftsmanship, incorporating oak treads and handrails with contrasting white strings and risers. The design includes a fully continuous handrail, featuring a captivating sweeping scrolling volute handrail feature at the start. Enhancing durability, 16mm solid steel spindles are finished with a bespoke powder coated metallic Bronze to meet client specifications.



**Wistow,
Leicestershire**

—
Oak



This three storey staircase is the ultimate in sophistication. Featuring oak exposed (carpeted) 16mm powder coated mild steel balusters, the design and manufacture seamlessly blends elegance and comfort. Concealed cranked steel supports replace traditional storey-height newels, optimising both aesthetics and functionality. This design combines the warmth of oak with the strength of steel for a truly remarkable centrepiece.



**Cambridge,
Cambridgeshire**

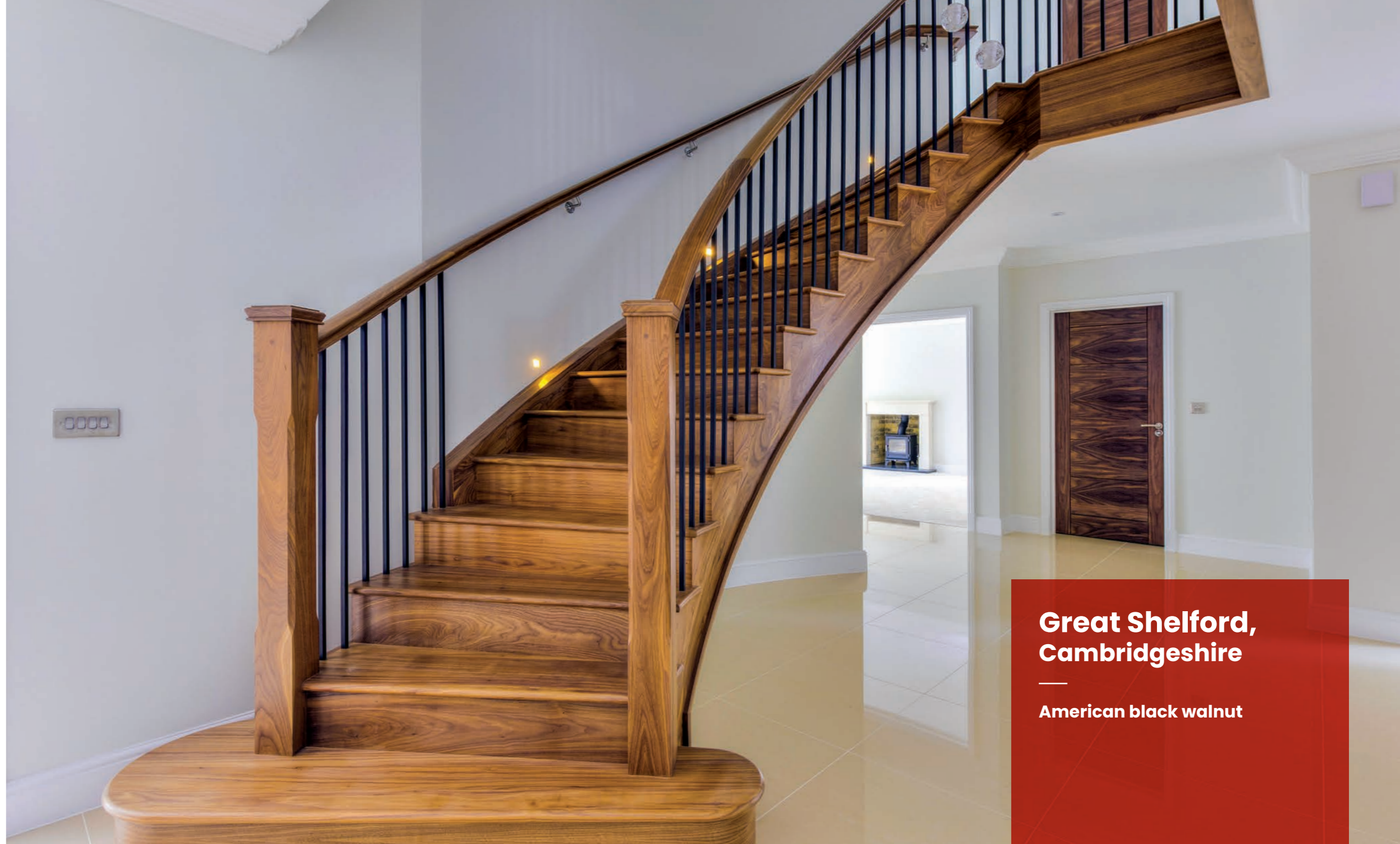
—
Oak



Our client – a prestige housebuilder – wanted a showstopping feature staircase for the central hallway of this luxury new – build home.

We designed and built a helical, cut-string staircase, rising to the first floor with a gentle curve. We used rich American black walnut, with structural powder coated spindles and a continuous handrail throughout.

As an additional touch, the left-hand balustrade seamlessly becomes a wall handrail as the staircase ascends.



**Great Shelford,
Cambridgeshire**

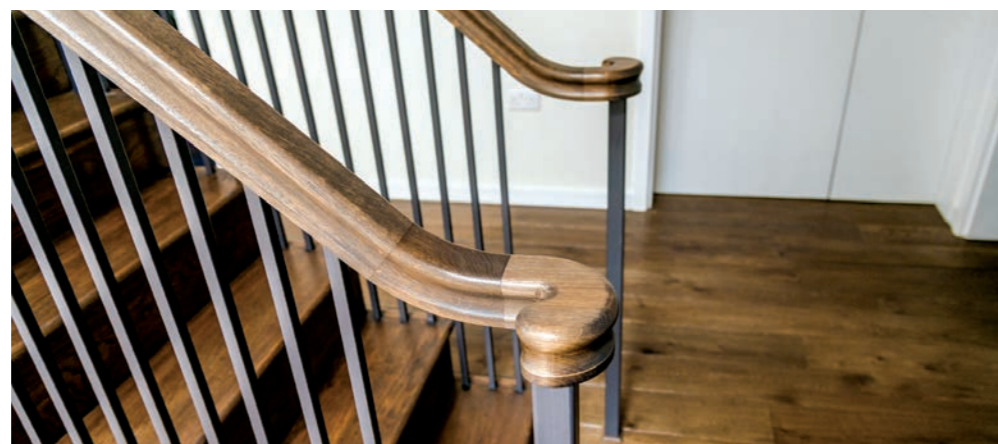
American black walnut



Passing through three storeys of a luxury London home, this staircase features striking powder coated spindles, with complementary square feature posts, and ramped and wreathed handrails.

Structural steels were used at storey height to eliminate the need for supporting newels.

The end result is a bold staircase that allows light to filter down from the upper levels and create a feeling of space and height in this townhouse-style home.



**Richmond,
South West London**

Dark stained full oak



Working closely with our client, we designed and built a cut-string staircase for the entrance hall of their home.

Crafted from a combination of American black walnut and painted timber, the staircase features a curved string and matching handrail.

Structural metal spindles with bespoke 'knot' detailing and a walnut handrail form the balustrade, with a matching ramped and wreathed wall handrail.

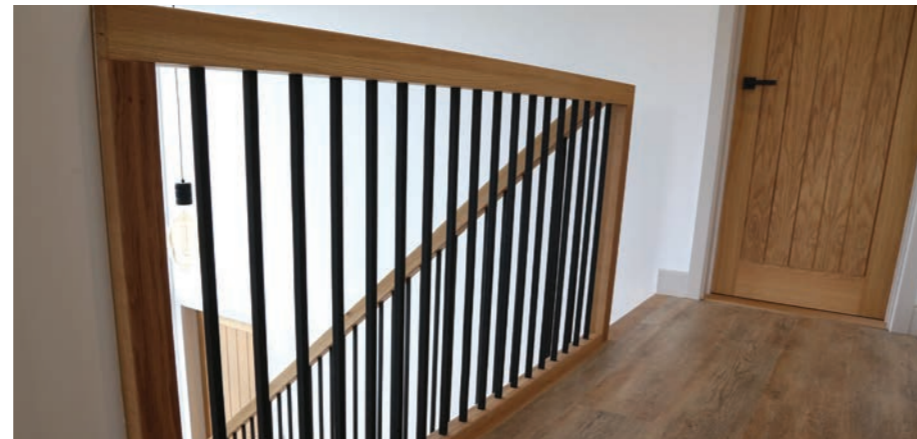


**Stamford,
Lincolnshire**

American black walnut



This profiled staircase, with solid oak treads and risers is a symphony of design and precision, each step a testament to timeless craftsmanship. The 70mm continuous oak handrail and newel system, ensures a seamless blend of elegance and innovation. Complementing this, 16mm spindles, powder coated in black and manufactured from solid mild steel, delivers a high-quality sound and feel, tailored precisely to client specifications.

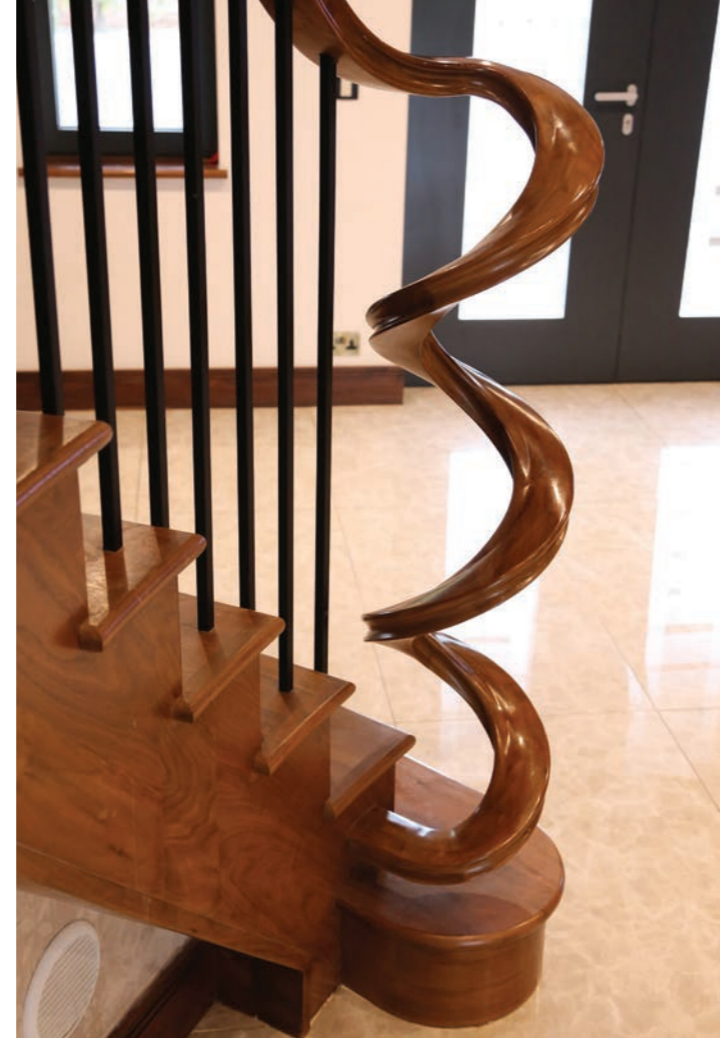


**Soham,
Cambridgeshire**

Solid Oak



This exquisite three storey, solid black walnut staircase is a statement of luxury and craftsmanship. Enjoy the beauty of a fully continuous handrail, adorned with a captivating sweeping corkscrew handrail feature at the beginning. Precision meets aesthetics with 16mm spindles, powder-coated in black and crafted from solid mild steel, ensuring a high-quality sound and feel tailored to the clients exact specifications.



**Uxbridge,
Middlesex**

Solid Black Walnut

Working with us

Turning your ideas into reality

We work closely with our customers on every project. Whether you have fully-formed designs from your architect or just a few rough sketches, we'll tailor our services to your needs. Speak to our team today – we'll be happy to discuss your project.

The process



1. Email your drawings

Or give us a call to discuss your ideas and we'll produce a quote for your staircase.



4. Start manufacture

Once you have a design you love, our team of specialist carpenters will start hand-crafting your staircase.



2. Confirm your order

Let us know if you'd like to go ahead and we'll get started.



5. Deliver to site

We'll deliver your stairs to site, carefully packaged and ready for assembly.



3. Visit your site

We'll come to your site, measure up and finalise the design and material choices.



6. Install your stairs

We can do this for you, or hand over to your carpenter or builder to install the stairs themselves.

Good to know

Some things you might find useful

Our team is always on-hand to answer your questions. But in the meantime, here are some staircase terminology definitions you may find helpful.

String

The panel on either side of the stair to which the treads and risers are attached.

Tread

The part of the stair you walk on as you ascend a staircase.

Riser

The vertical part of the stair, covering the space between one step and the next.

Newel

A structural supporting post that takes the weight of the stair and supports the handrail.

Handrail

The rail topping the balustrade, serving as a support or guard at the side of the staircase.

Baserail

A rail at the base of the balustrade and on top of the stair string, into which spindles or panels are fixed.

Apron

A decorative panel that hangs beneath the baserail, used to cover floor joists or landing trimmer.

Nosing

A thin strip of wood used to finish the edge of stair treads and conceal the edge of floor coverings.

String capping

A mould fixed to the top of the string nearest to the wall.

Caps and drops

The decorative top section of a newel post. Caps can also be fitted to the base of an exposed upper-level newel post – these are known as drop newel caps.

Balustrade

The collective term for the handrail and the vertical supporting structure beneath it. This is commonly made from glass, metal or wood.

Flight styles

Classic

A traditional stair design, with closed stringer and closed risers.

Open-riser

In an open-riser staircase, the risers are removed, leaving a gap between each stair tread.

Cut-string

A cut-string staircase has its string panel cut to follow the profile of the stair treads.

Profiled string

A staircase where the string has been cut and finished to the shape of the stairs, exposing the tread profile.

Helical

Also known as curved stairs, helical stairs ascend to the upper floors in a smooth, sweeping arc.

Floating

Floating stairs have no support between the treads, and are usually fixed directly to a solid wall on one side.

Balustrade styles

Turned

Spindles are hand-turned in a lathe to give a smooth, rounded finish.

Square

Spindles are square-cut for a clean and simple look.

Stop-chamfer or Stop Ovolo

Square spindles with the middle section chamfered for a softer edge.

Clamped glass

Glass balustrades that use metal clamps to hold the glass in place.

Framed glass

A glass balustrade that is fixed into the staircase base rail, with a handrail fixed to the top, creating a framed effect.

Structural glass

A glass balustrade made using toughened, laminated structural glass.

Also from David Smith St Ives



I-JOIST

I-joists



POSI-JOIST

Metal web joists



ROOF TRUSS

Roof trusses



FIREDOORS

Fire doors



GLULAM

Glulam



SPANDREL PANELS

Spandrel panels



PORCHES

Porches



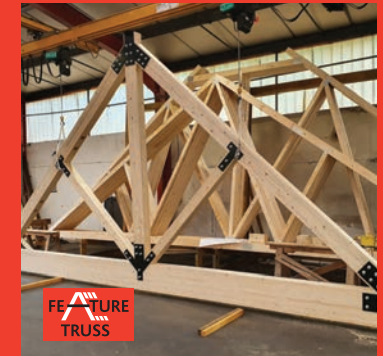
DORMERS

Dormers



TIMBER FRAME

Timber frame



FEATURE TRUSS

Feature truss

T: 01480 309900

E: info@davidsmith.co.uk

W: www.davidsmith.co.uk

David Smith St Ives Ltd.

Marley Road | St Ives, Huntingdon | Cambridgeshire | PE27 3EX

