



**Do not access the bed of the vehicle unless absolutely necessary and only when using agreed method of working at height safety equipment.**

**Personal Protective Equipment (PPE) Required**

|  |                        |   |                    |   |                        |   |                        |
|--|------------------------|---|--------------------|---|------------------------|---|------------------------|
|  | <b>Head Protection</b> |  | <b>Hi Vis wear</b> |  | <b>Safety footwear</b> |  | <b>Hand protection</b> |
|--|------------------------|---|--------------------|---|------------------------|---|------------------------|

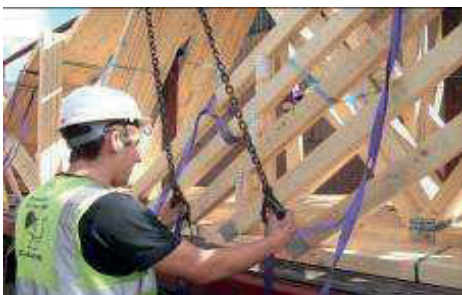
**Main Hazards**

|  |                |   |                        |   |                          |   |                      |   |                                 |   |               |
|--|----------------|---|------------------------|---|--------------------------|---|----------------------|---|---------------------------------|---|---------------|
|  | <b>Weather</b> |  | <b>Manual Handling</b> |  | <b>Slip, Trip, Falls</b> |  | <b>Falling items</b> |  | <b>Falling items from above</b> |  | <b>Cranes</b> |
|--|----------------|---|------------------------|---|--------------------------|---|----------------------|---|---------------------------------|---|---------------|

**Method**

**1.** The supplier does not physically offload. They do advise on unload order, the Safe System of Unload and will release the load on customer instruction. The contractor is responsible for the provision of a crane, the qualified operator and the slinger / banksman. After parking on site, the driver inspects the load ensuring it is still secure, with all banding and / or rope in place. Once inspected the driver must sign in at the site manager’s office. If the unload is deemed unsafe, the driver will contact his manager for instruction. This may result in the load being returned to the manufacturer

**4.** On instruction from the site responsible person the driver will release the transport straps



**2.** Trusses will arrive pre-slung with appropriate 7:1 lifting slings. These slings will be reachable from ground level and should be deemed as single use



**5.** Once the order of unloading is agreed between the slinger and driver, the slinger will attach the purple lifting slings to the crane hooks



**3.** The manufacturer will supply truss packs secured to the trailer with 8mm blue rope. You should familiarise yourself with which rope attaches which pack to the centre bars.



**6** The crane will then take up the slack of the lift





**7.** The driver will cut the individual blue 8mm rope attaching the pack to the centre bars. This must be carried out from a safe position using a telescopic cutting staff.



**8.** The crane will then lift the truss pack from the bed of the trailer. NEVER stand in the danger area where the trusses could potentially fall. Do not allow any others to enter the danger area.

